



EdgeFoil® FXRefill ReLOADING

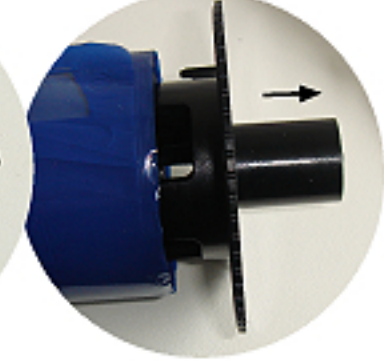
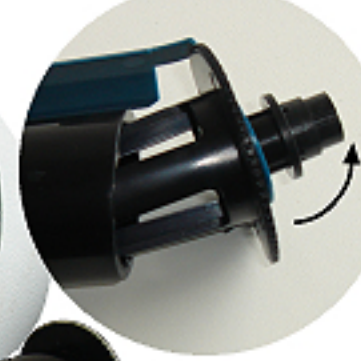
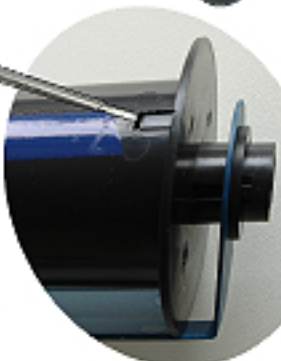
RF CHIP:

Blue 'Bridge' on Foil Refills holds Core End Mouldings together.
 White Label holds the RF Chip - the Foil ID Chip.
 Copyright Issues prevent EdgeFoil® FXRefills using this Chip.
 Blue 'Bridge' can be removed when using EdgeFoil® FXRefills
 Foil ID Chip Functions are then excluded from LCD Display

RECOVER CORE INSERTS

from USED Original FXRefills

Use again with EdgeFoil® FXRefills -
 Release Core Keyway. Use a small screwdriver.
 Lever up the small Top 'Key Way' - Brake it off!
Important! New Foils may tear if this is not done!
 Ease Black Core End Mouldings OUT of used cores
 Persuade movement with Screwdriver if stubborn to move.
 Complete procedure for each original FXRefill as
 you build your EdgeFoil® FXRefill Colour Library
 We Recycle USED cores. Collect together a LARGE boxfull.
 Ring Print One UK Tel: 01254 704330 - We'll Collect!



WE HELP YOU RECYCLE

RELOADING EdgeFoil® FXRefills:

Place your new EdgeFoil® FX Refill assembly on a clean bench -
New Foil to the Right.
Take Up Core on your Left.

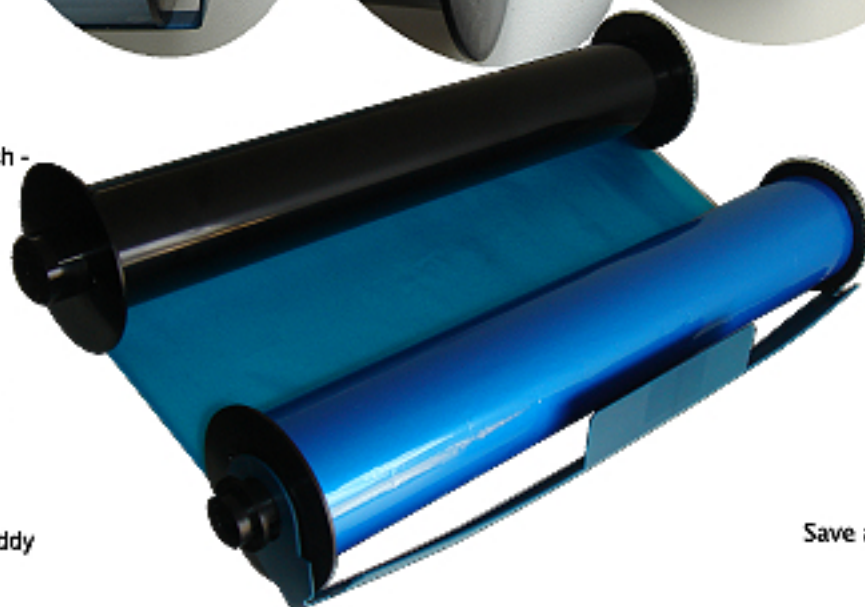
Insert your recovered FXRefill Black Core End Mouldings

Insert 2 Recovered Mouldings into Empty Take Up Core
 1 x Drive Core Moulding (Notched) away from you
 1 x Smooth Edged Moulding near to you

Insert 2 Recovered Mouldings into FXRefill new Foil Core
 1 x Drive Core Moulding (Notched) away from you .
 1 x Smooth Edged Moulding near to you

Refill 'Wrap' is an assembly aid - Remove after assembly

Place EdgeFoil® FXRefill assembly into EdgeFX Cartridge Caddy
 You've saved ££'s by this self assembly.



printone^{UK}

Tel: 01254 704330
www.EdgeFoil.co.uk



RECYCLE

We Recycle USED FX Foil Cores
 Save a Large Boxfull - Ring Us - We'll Collect
REFILL NOT LANDFILL